

**BRIEFING NOTES FOR L660, L678,L680,L850 AND L1496.**

Pay careful attention to page T4, T1.1 Tender notice and invitation to tender as the most important information is highlighted there.

Pay special attention to all the pages that contain this heading –

**Failure to complete, sign and date this form or failure to acknowledge receipt of each Addendum issued or failure to return with the quotation submission a complete copy of each Addendum issued shall result in the quotation being considered non-responsive in terms of subclause F.3.8 of the Conditions of Tender and such a quotation shall be rejected.**

If this heading is displayed and a contractor feels that it is N/A and does not sign the page, the tender will be non-responsive. The content may be marked as N/A if so applicable as is generally the case with Page T13 but the Bidder must still sign and date the required spaces as instructed. Please note initialling the bottom of the page is not seen as a signature it is simply acknowledging that the bidder has seen the page and is aware of what is in his/her document.

Page T14 must be completed in full. Pay special attention to the highlighted sections-

SUPPLIER COMPLIANCE STATUS	TAX COMPLIANCE SYSTEM PIN:	OR	CENTRAL SUPPLIER DATABASE No:	MAAA
B-BBEE STATUS LEVEL VERIFICATION CERTIFICATE	TICK APPLICABLE BOX] <input type="checkbox"/> Yes <input type="checkbox"/> No	B-BBEE STATUS LEVEL SWORN AFFIDAVIT	[TICK APPLICABLE BOX] <input type="checkbox"/> Yes <input type="checkbox"/> No	
<b>[A B-BBEE STATUS LEVEL VERIFICATION CERTIFICATE/ SWORN AFFIDAVIT (FOR EMES &amp; QSEs) MUST BE SUBMITTED IN ORDER TO QUALIFY FOR PREFERENCE POINTS FOR B-BBEE]</b>				
ARE YOU THE ACCREDITED REPRESENTATIVE IN SOUTH AFRICA FOR THE GOODS /SERVICES /WORKS OFFERED?  [IF YES ENCLOSE PROOF]	<input type="checkbox"/> Yes <input type="checkbox"/> No	ARE YOU A FOREIGN BASED SUPPLIER FOR THE GOODS /SERVICES /WORKS OFFERED?	<input type="checkbox"/> Yes <input type="checkbox"/> No [IF YES, ANSWER PART B:3]	

Are you a foreign based supplier – This answer should generally be **No** and the bottom section (**QUESTIONNAIRE TO BIDDING FOREIGN SUPPLIERS**) does not need to be completed as the contractor has already indicated that he is not a foreign based supplier.

T15 must be completed and signed thus accepting the terms for bidding.

SBD 4, 8 and 9 are extremely important and failing to answer all the questions as required also lead to a bidder’s offer being non-responsive. This has occurred on numerous occasions.

SBD 6.1 Note 6.1 must be completed to claim BBBEE Points. It should be completed as follows:  
B-BBEE Status Level of Contributor: 1 (As the BBBEE level the bidder’s certificate or affidavit grants) = ...20 (Correlating points to level – see table 4.1) (maximum of 20 points)

SBD 6.2 is not applicable to this Contract as there is no imported items.

Returnable D - page T35, Generally the simplest and most frequent submission is a Sworn Affidavit. It should be noted that an affidavit must be an original that is certified by a commissioner of oaths. If a copy is submitted the contractor will not be awarded any preferential points and therefore lose out on 20 points. On the Affidavit one question is regarding the financial year for which the affidavit is done. This must be the latest financial year and not older than 12 months from date of closing of the bid, but also this time cannot be in the future, e.g. February 2022. All provisions for disclosing information under Oath must be complied with to ensure the affidavit is acceptable. For BBBEE certificate – these must be submitted as a copy – no need of certification.

Returnable E - page T36 must be completed and signed by all members/directors. If one of the members/directors fails to sign it is seen as a non-responsive document due to the directors/members not being aware of the tender submission. Also ensure that the specimen signature does appear on the resolution letter of the company owners attached to this returnable.

Returnable G - page T38 must be completed and have CV's attached as is indicated at the top of the Page. G2 has been redacted and it is not necessary to complete this section.

Returnable J - page T43 Must be signed, dated and completed as indicated on the bottom of page T44. Please follow the instructions on page T43 on how to calculate the minimum labour percentage and note that the specified minimum labour percentage is 4% as indicated. While tendering below the minimum is no longer a disqualification criterion, a penalty would apply to the bid if awarded for not achieving the minimum target.

Returnable K - page T45 Must be completed correctly and signed. This should be read and completed accordingly. Question 3 has three sub headings. Generally, the contractor will answer yes to only one of these. The corresponding number in question 4 must then also be completed. Example – If 3(a) is answered yes then the contractor must answer 4(a) as well, If 3(b) then 4(b) etc

Page C3 as the form of offer must be signed and the amount in words must be completed failure to do this will invalidate the tender.

Please check that the amount on C3(For of Offer) and C39(BOQ Summary) match.

On a contractual note the following must be mentioned:

The construction period is 12 months and failure to complete the project within the specified timeframe will result in penalties. It is of extreme importance that these risks be factored into the pricing of the documents as the bidders' price is also compared to realistic market value of the works that has been assessed by a third party to guide if the quoted price is reasonable.

### C4.1 LOCALITY PLAN

Local Road 660 is located to the East of the Wartburg area. Access to this road can be achieved by travelling on P25-1 from Wartburg for approximately 1.5 KM before turning onto P25-2. Once on P25-2, travel for 36 KM before it turns into P25-3. Once on P25-3 travel for a further 3.5 KM before reaching the start of L660. The location of the road can be seen in figure C4.1.

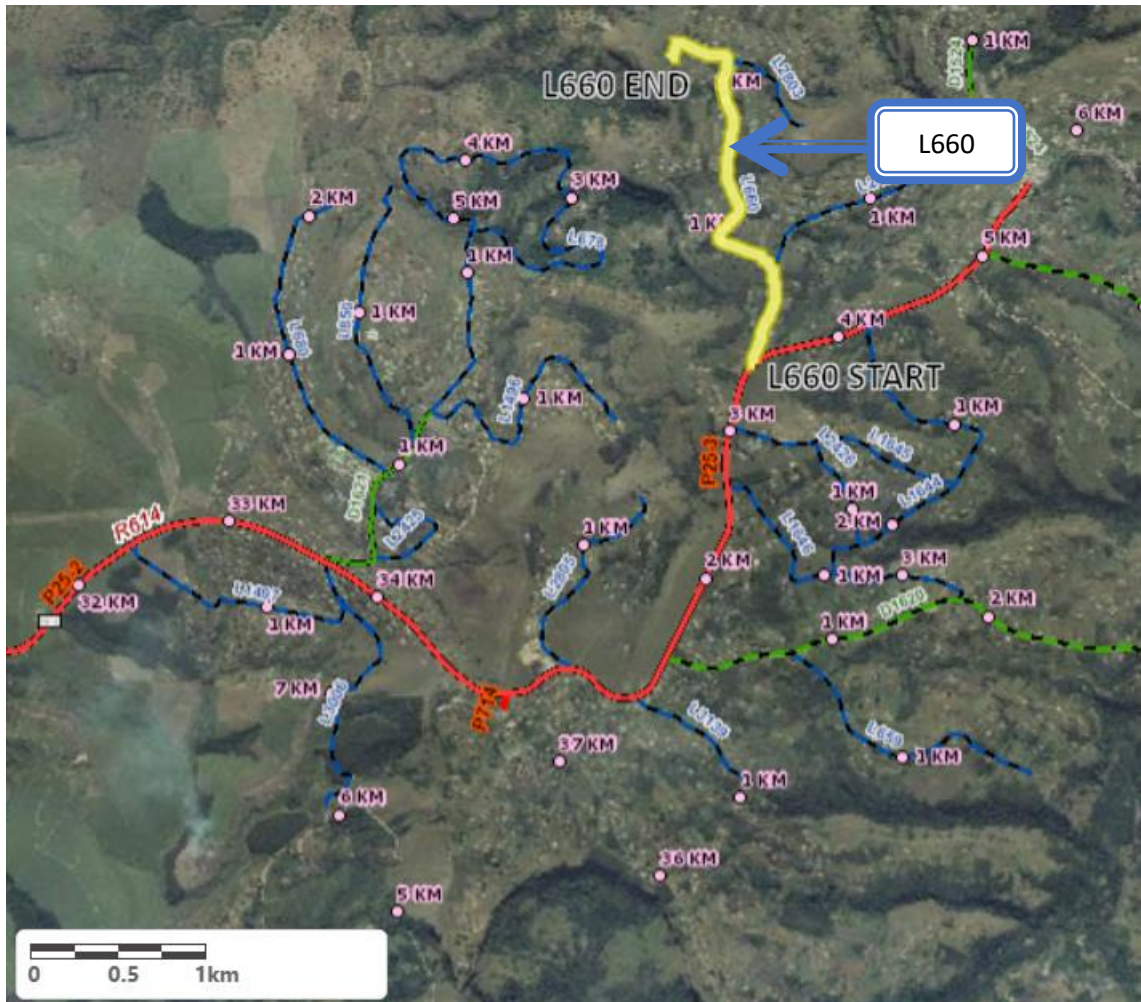


Figure C4.1 – Locality Plan of Local Road 660

The approximate limits of construction can be seen in **Table C4.1**.

**Table C4.1 – Approximate Start and End co-ordinates of L660**

<u>Km</u>	<u>Latitude</u>	<u>Longitude</u>
L660 Km 0.00	29,38397°S	30,86704°E
L660 Km 2.70	29,36553°S	30,86228°E

## PROJECT BACKGROUND

WARD: 4

TRIBAL COUNCIL: EMathulini Traditional Council

FACILITIES AND SERVICES ALONG THE ROAD: Schools, Hospital

TERRAIN: Mountainous

CONDITION OF THE CURRENT GRAVEL ON THE ROAD: LOSS OF GRAVEL MATERIAL AND SCOUR

ROUTE TO THE QUARRY : The quarry is located at L678

Average distance to the quarry is 4km.

Please see the photos below for some images of the roads condition and the borrow pit.

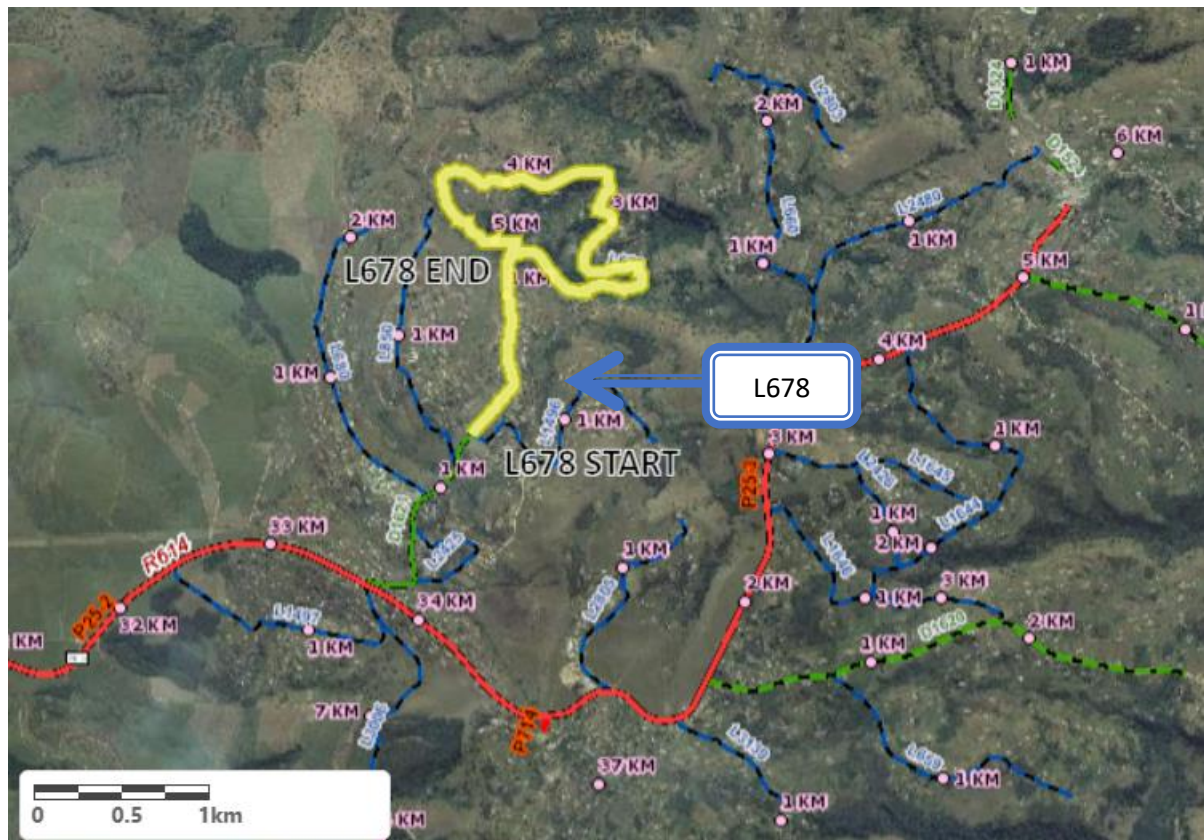
Road condition



Quarry



Local Road 678 is located to the East of the Wartburg area. Access to this road can be achieved by travelling on P25-1 from Wartburg for 1.5 KM before turning onto P25-2. Once on P25-2 travel for approximately 33.5 KM before turning onto D1621. Once on the district road travel for 1.5 KM before reaching the start of L678. The location of the road can be seen in figure C4.2.



**Figure C4.2 – Locality Plan of Local Road 678**

The approximate limits of construction can be seen in **Table C4.2**.

**Table C4.2 – Approximate Start and End co-ordinates of L678**

Km	Latitude	Longitude
L678 Km 0.00	29,38662°S	30,84806°E
L678 Km 5.23	29,37519°S	30,85080°E

### **PROJECT BACKGROUND**

**WARD: 4**

**TRIBAL COUNCIL: EMathulini Traditional Council**

**FACILITIES AND SERVICES ALONG THE ROAD: Schools, Hospital**

**TERRAIN: Mountainous**

**CONDITION OF THE CURRENT GRAVEL ON THE ROAD: LOSS OF GRAVEL MATERIAL AND SCOUR**

**ROUTE TO THE QUARRY : The quarry is located on L678 at km 2**

Please see the photos below for some images of the roads condition and the borrow pit.  
Road condition



Quarry



Local Road 680 is located to the East of the Wartburg area. Access to this road can be achieved by travelling on P25-1 from Wartburg for 1.5 KM before turning onto P25-2. Once on P25-2 travel for approximately 33.5 KM before turning onto D1621. Once on the district road travel for 800 m before reaching the start of L680. The location of the road can be seen in figure C4.3.

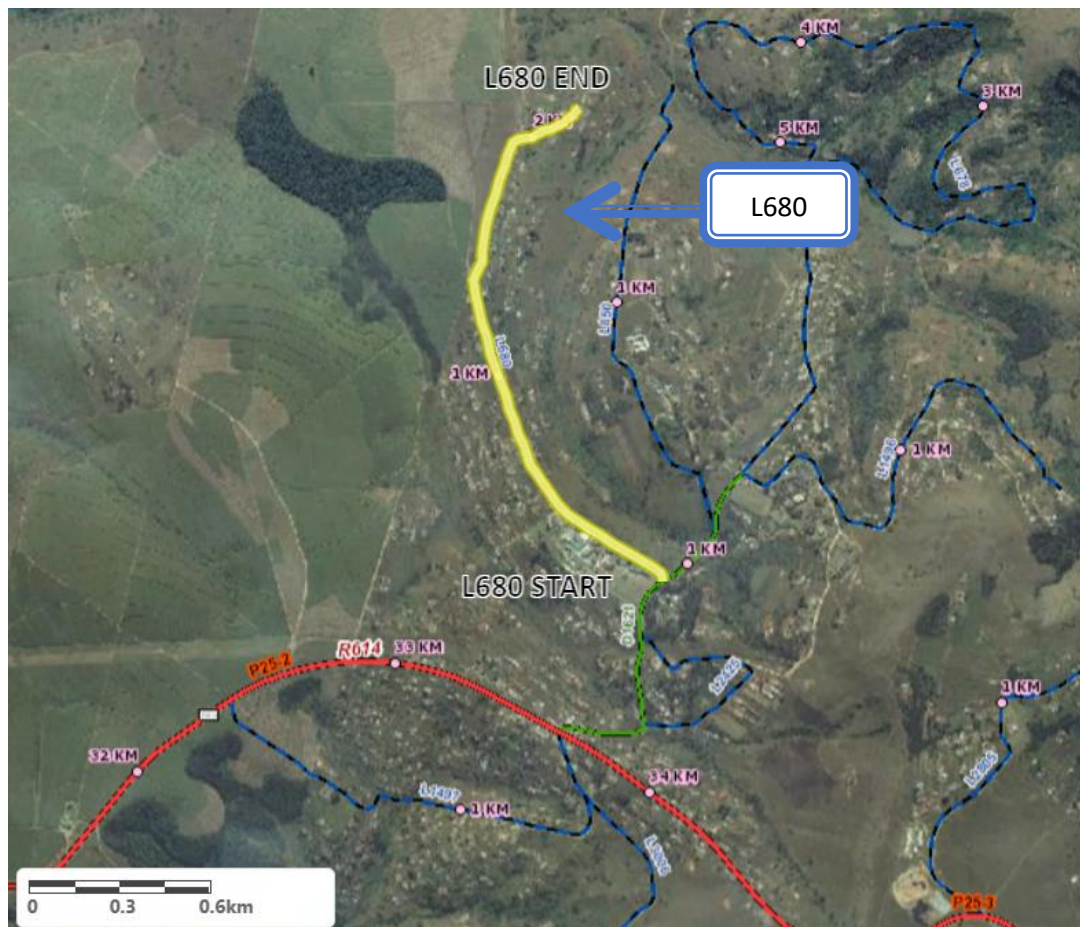


Figure C4.3 – Locality Plan of Local Road 680

The approximate limits of construction can be seen in Table C4.3.

Table C4.3 – Approximate Start and End co-ordinates of L680

Km	Latitude	Longitude
L680 Km 0.00	29,39042°S	30,84538°E
L680 Km 2.19	29,37406°S	30,84247°E

## PROJECT BACKGROUND

WARD: 4

TRIBAL COUNCIL: EMathulini Traditional Council

FACILITIES AND SERVICES ALONG THE ROAD: Schools, Hospital

TERRAIN: Mountainous

CONDITION OF THE CURRENT GRAVEL ON THE ROAD: LOSS OF GRAVEL MATERIAL AND SCOUR

ROUTE TO THE QUARRY : take D1621 and continue straight to L678 at km 2

Average distance to the quarry is 3km.

Please see the photos below for some images of the roads condition and the borrow pit.

Road condition

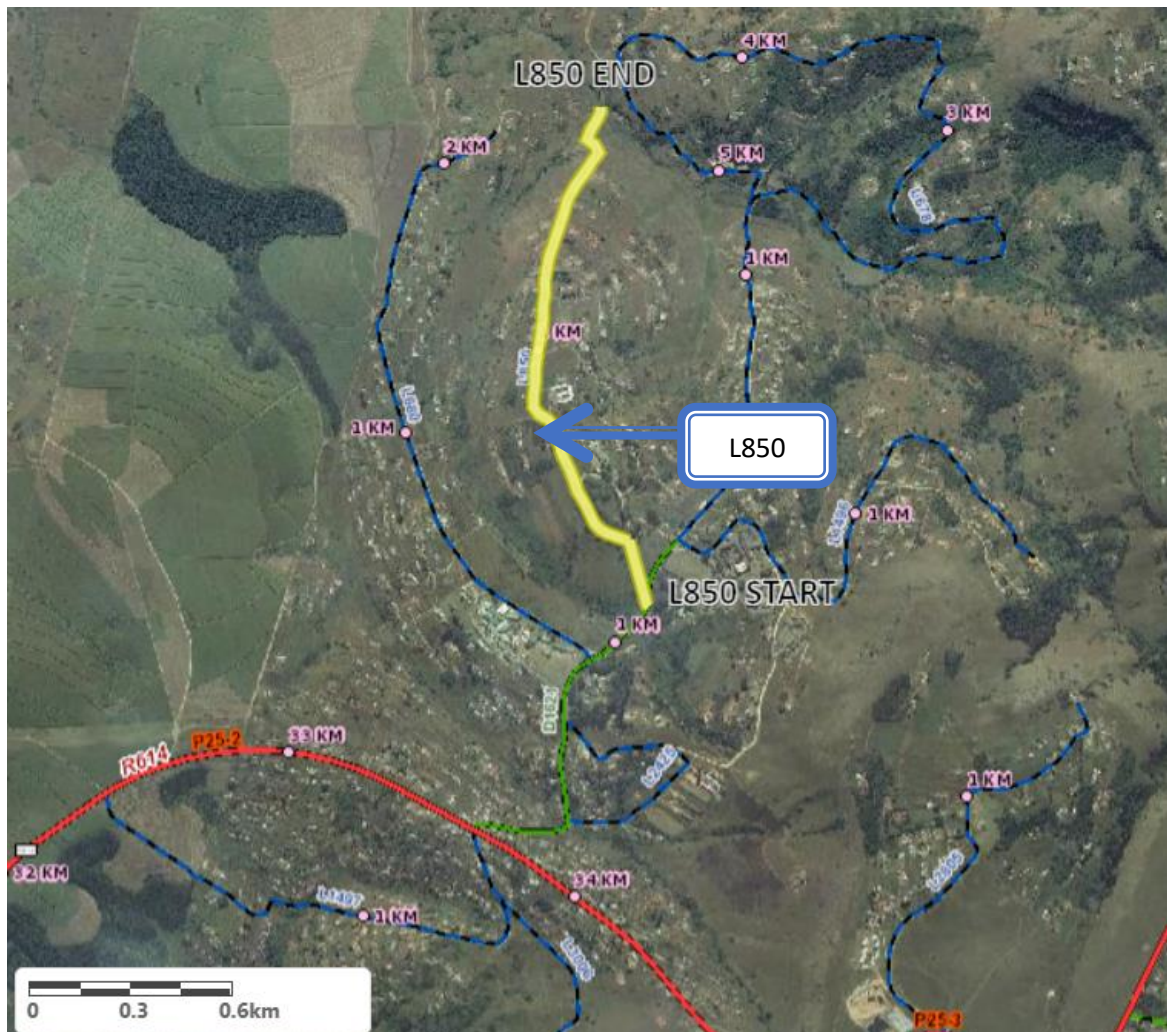


Quarry





Local Road 850 is located to the East of the Wartburg area. Access to this road can be achieved by travelling on P25-1 from Wartburg for 1.5 KM before turning onto P25-2. Once on P25-2 travel for approximately 33.5 KM before turning onto D1621. Once on the district road travel for approximately 1.2 KM before reaching the start of L850. The location of the road can be seen in figure C4.4.



**Figure C4.4 – Locality Plan of Local Road 850**

The approximate limits of construction can be seen in **Table C4.4**.

**Table C4.4 – Approximate Start and End co-ordinates of L850**

<b>Km</b>	<b>Latitude</b>	<b>Longitude</b>
<b>L850 Km 0.00</b>	29,38874°S	30,84718°E
<b>L850 Km 1.89</b>	29,37357°S	30,84569°E

## PROJECT BACKGROUND

WARD: 4

TRIBAL COUNCIL: EMathulini Traditional Council

FACILITIES AND SERVICES ALONG THE ROAD: Schools, Hospital

TERRAIN: Mountainous

CONDITION OF THE CURRENT GRAVEL ON THE ROAD: LOSS OF GRAVEL MATERIAL AND SCOUR

ROUTE TO THE QUARRY : take D1621 and continue straight to L678 at km 2

Average distance to the quarry is 3km.

Please see the photos below for some images of the roads condition and the borrow pit.

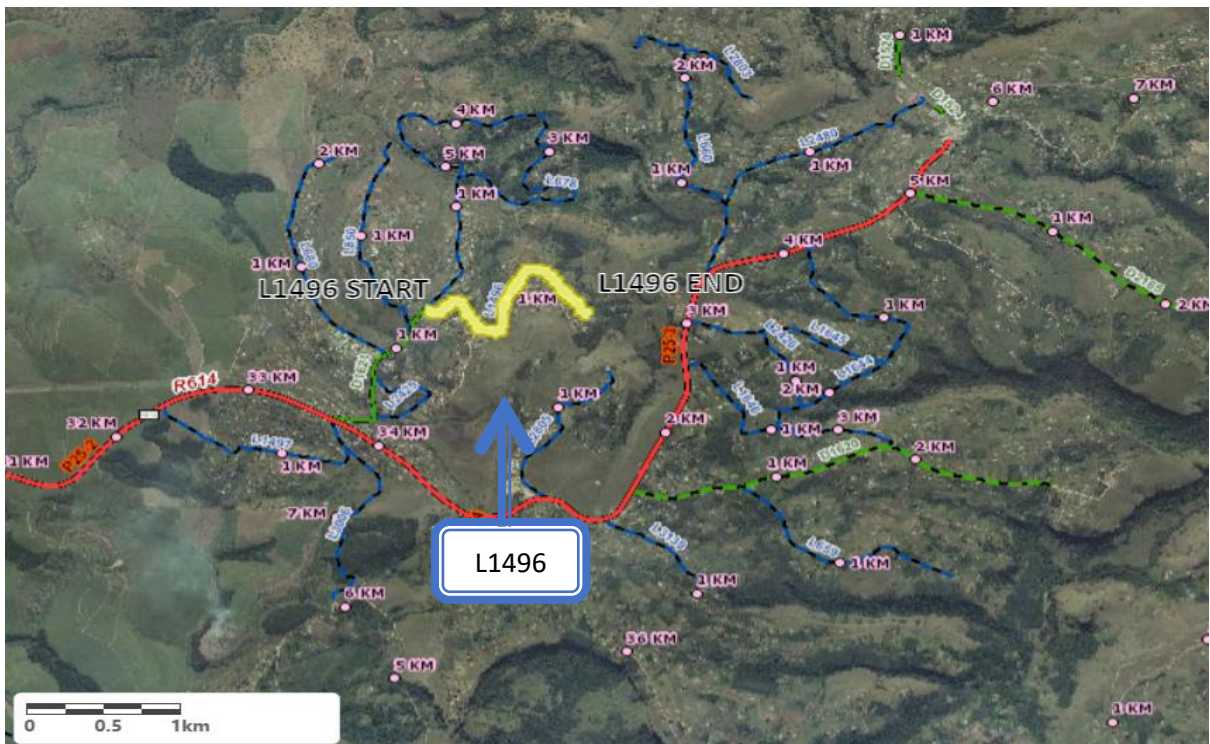
Road condition



Quarry



Local Road 1496 is located to the East of the Wartburg area. Access to this road can be achieved by travelling on P25-1 from Wartburg for 1.5 KM before turning onto P25-2. Once on P25-2 travel for approximately 33.5 KM before turning onto D1621. Once on the district road travel for 1.5 KM before reaching the start of L1496. The location of the road can be seen in figure C4.5.



**Figure C4.5 – Locality Plan of Local Road 1496**

The approximate limits of construction can be seen in **Table C4.5**.

**Table C4.5 – Approximate Start and End co-ordinates of L1496**

<b>Km</b>	<b>Latitude</b>	<b>Longitude</b>
<b>L1496 Km 0.00</b>	29,38697°S	30,84843°E
<b>L1496 Km 1.91</b>	29,38709°S	30,85878°E

**WARD: 4**

**TRIBAL COUNCIL: EMathulini Traditional Council**

**FACILITIES AND SERVICES ALONG THE ROAD: Schools, Hospital**

**TERRAIN: Mountainous**

**CONDITION OF THE CURRENT GRAVEL ON THE ROAD: LOSS OF GRAVEL MATERIAL AND SCOUR**

**ROUTE TO THE QUARRY: take D1621 and continue straight to L678 at km 2**

**Average distance to the quarry is 2km.**

Please see the photos below for some images of the roads condition and the borrow pit.

Road condition



Quarry

